

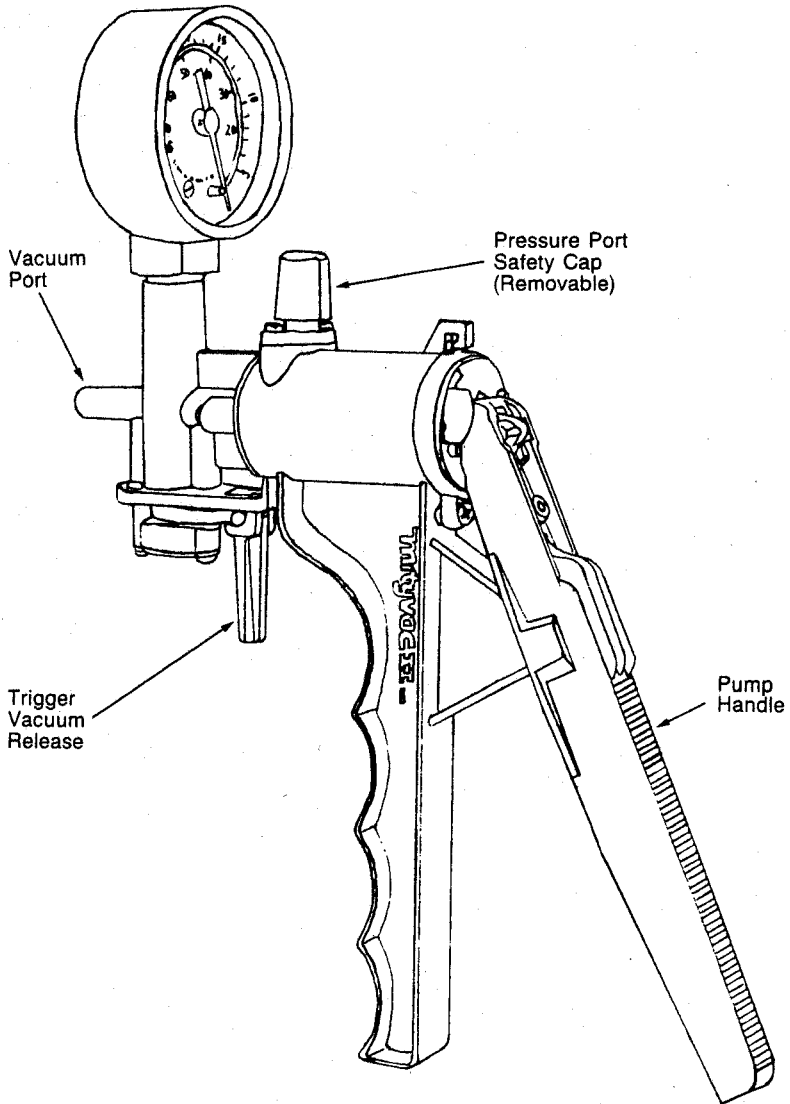
Important information about your

Kartell "MITYVAC" VACUUM PUMP

Cat. 1398 and 1399

- ❖ The **Kartell** "MITYVAC" PUMP is NOT designed for the DIRECT pumping of liquids. When used for liquid transfer it must be protected from fluid entry by the use of an in-line reservoir.
- ❖ The internal mechanism and operation of the pump are affected by volatile fluids such as acids, bases, etc. Should such fluids be inadvertently "pulled" into the pump, quickly pump through clean water to cleanse.
- ❖ The straight lever at the base of the unit is the vacuum release valve. Pulling it straight back towards the handles allows air to enter the system, thus relieving the vacuum.
- ❖ The small cap on the pressure fitting is a friction fit, and can be removed with a twisting/pulling action. This cap should always be in place when using the pump, except when using pressure fitting.
- ❖ Remember the vacuum gauge, of Cat. 1399, is a delicate instrument and should be handled accordingly.
- ❖ The **Kartell** "MITYVAC" VACUUM PUMP is guaranteed against imperfections in material and workmanship for a period of 90 days from date of purchase, and will be replaced free of charge subject to examination by the manufacturer or his representative. No other liability for direct, incidental or consequential damages is implied or accepted under this warranty.

THE MITYVAC PUMP



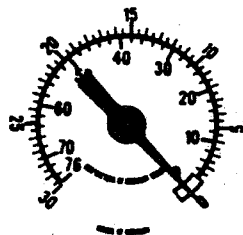
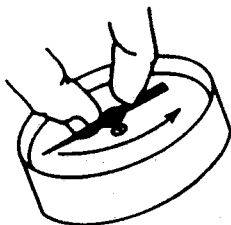
Cat. 1399

INSTRUCTIONS FOR RESETTING THE NEEDLE ON THE GAUGE OF A 'MITYVAC' VACUUM PUMP Cat. 1399

Occasionally the needle on a Mityvac gauge will be jarred out of its proper orientation. This can happen as a result of rough handling in a shipment, or dropping the pump, or bumping the gauge against a stationary object. This condition shows up when, with no vacuum applied, the needle is outside the "zero box".

This condition can be remedied as follows ...

1. Remove the clear lens from the gauge by *carefully* pulling it up from one edge. Usually the best way to do this is with your fingernails. *Take care not to bend the needle while removing the lens.*
2. Gently, but firmly, grasp the needle at its hub, using your index finger and thumb (see diagram).
3. Gently turn the needle *counterclockwise* until there is some solid resistance. This will be nearly one full turn. At this point continue to gently turn the needle until it comes off the shaft, usually about another quarter turn.
4. Make sure the gauge is securely resting on a firm surface. Lightly place the needle hub back on the shaft, with the needle point over the zero box. Once the needle is in its desired position, firmly press straight down to seat the hub onto the shaft. The needle should now be attached to the shaft and pointing to zero. If not, go back to step 2, and start over.
5. Carefully test the pump to ensure everything is OK, then snap the lens back into place.



**Please visit our website at
www.kartell.com.au**